

Approval body for construction products  
and types of construction

Bautechnisches Prüfamt

An institution established by the Federal and  
Laender Governments



## European Technical Assessment

ETA-15/0003  
of 13 January 2015

English translation prepared by DIBt - Original version in German language

### General Part

Technical Assessment Body issuing the  
European Technical Assessment:

Deutsches Institut für Bautechnik

Trade name of the construction product

PENTAFLEX KB, PENTAFLEX KB Plus, PENTAFLEX  
FTS, PENTAFLEX OBS, PENTAFLEX ABS

Product family  
to which the construction product belongs

Coated metal water stop sheet for construction and  
controlled crack joints in waterproof concrete

Manufacturer

H-Bau Technik GmbH  
Am Güterbahnhof 20  
79771 Klettgau-Erzingen  
DEUTSCHLAND

Manufacturing plant

H-Bau Technik GmbH  
Am Güterbahnhof 20  
79771 Klettgau-Erzingen  
DEUTSCHLAND

This European Technical Assessment  
contains

9 pages including 4 annexes which form an integral part  
of this assessment

This European Technical Assessment is  
issued in accordance with Regulation (EU)  
No 305/2011, on the basis of

European Assessment Document (EAD)  
32002-00-0605 "Coated metal water stop sheet for  
construction and controlled crack joints in waterproof  
concrete"

The European Technical Assessment is issued by the Technical Assessment Body in its official language. Translations of this European Technical Assessment in other languages shall fully correspond to the original issued document and shall be identified as such.

Communication of this European Technical Assessment, including transmission by electronic means, shall be in full. However, partial reproduction may only be made with the written consent of the issuing Technical Assessment Body. Any partial reproduction has to be identified as such.

This European Technical Assessment may be withdrawn by the issuing Technical Assessment Body, in particular pursuant to information by the Commission according to Article 25 Paragraph 3 of Regulation (EU) No 305/2011.

## Specific Part

### 1 Description of the product

The water stop "PENTAFLEX" consists of the following components:

- Galvanized metal sheet with the dimensions:  
h = 167 mm, t = 0.6 mm  
h = 80 mm, t = 0.6 mm
- Polymer modified bituminous coating

The metal sheet is fully coated with the bituminous coating.

For installation purposes the water stop is delivered with a protective foil on the bitumen coating and a safety line in longitudinal direction on the metal sheet. Furthermore there are holders for fixing the water stop during installation and clamps for fixing the overlapping joint between the ends of the water stop.

There are the following types of products:

PENTAFLEX KB – for horizontal and vertical construction joints

PENTAFLEX KB Plus – in addition with electrical grounding<sup>1</sup>

PENTAFLEX ABS – with stop end panel for working joints

PENTAFLEX OBS - for controlled crack joints in in-situ concrete elements

PENTAFLEX FTS – for controlled crack joints in pre-cast elements

Annex A shows the principles and performances of the product and furthermore the different types of products.

### 2 Specification of the intended use in accordance with the applicable European assessment Document

The water stop is used to seal joints in constructions made of concrete with high resistance to water (watertight concrete) against the penetration of pressing and un-pressing water (e.g. ground water) and to soil moisture.

There are the following classes of intended use:

- a) Construction joints
- b) Controlled crack joints for the use in pre-cast elements made of concrete
- c) Controlled crack joints for the use in in-situ concrete

The performances given in Section 3 are only valid if the water stop is used in compliance with the specifications and conditions given in Annex B.

The verifications and assessment methods on which this European Technical Assessment is based lead the assumption of working life of the water stop of 50 years. The indications given on the working life cannot be interpreted as a guarantee given by the producer, but are to be regarded only as a means for choosing the right products in relation to the expected economically reasonable working life of the works.

<sup>1</sup> In this ETA the determination and assessment of the function and performance of the electrical grounding is not included.

### 3 Performance of the product and references to the methods used for its assessment

#### 3.1 Mechanical resistance and stability (BWR 1)

Not applicable

#### 3.2 Safety in case of fire (BWR 2)

Essential characteristic	Performance
Reaction to fire	See Annex A1

#### 3.3 Hygiene, health and the environment (BWR 3)

Essential characteristic	Performance
Content and/or release of dangerous substances:	The chemical composition of the product has to be in compliance with the composition deposited at the Technical Assessment Body (DIBt). The product does not contain or release dangerous substances according to EOTA TR 034 (version Mai 2014)
Watertightness in end use conditions	See Annex A1

#### 3.4 Safety and accessibility (BWR 4)

Not applicable

#### 3.5 Protection against noise (BWR 5)

Not applicable

#### 3.6 Energy economy and heat retention (BWR 6)

Not applicable

#### 3.7 Sustainable use of natural resources (BWR 7)

For the sustainable use of natural resources no performance was investigated for this product.

#### 3.8 General aspects

The verification of durability and serviceability is part of testing the essential characteristics and by additional tests on the product respectively on the components:

Essential characteristic	Performance
Bondstrength at state of delivery	See Annex A1
Bondstrength after heat aging	See Annex A1
Volatile compounds (Lost of weight)	See Annex A1

The verification of durability and serviceability is only ensured if the specifications of intended use according to Annex B and the specifications of the technical file of the manufacturer are kept.

**4 Assessment and verification of constancy of performance (AVCP) system applied, with reference to its legal base**

According to Decision of the Commission of 25 January 1999 (99/90/EC) (OJ L 29/38 of 03.02.1999) amended on 8 January 2001 (2001/586/EC) (OJ L 209/33 of 02.08.2001) the system of assessment and verification of constancy of performance (see Annex V and Article 65 Paragraph 2 to Regulation (EU) No 305/2011) given in the following table applies.

Product	Intended use(s)	Level or class	System
Coated Metal water stop sheet	For building works	-	3
	For uses subject to regulation on reaction to fire	E	3

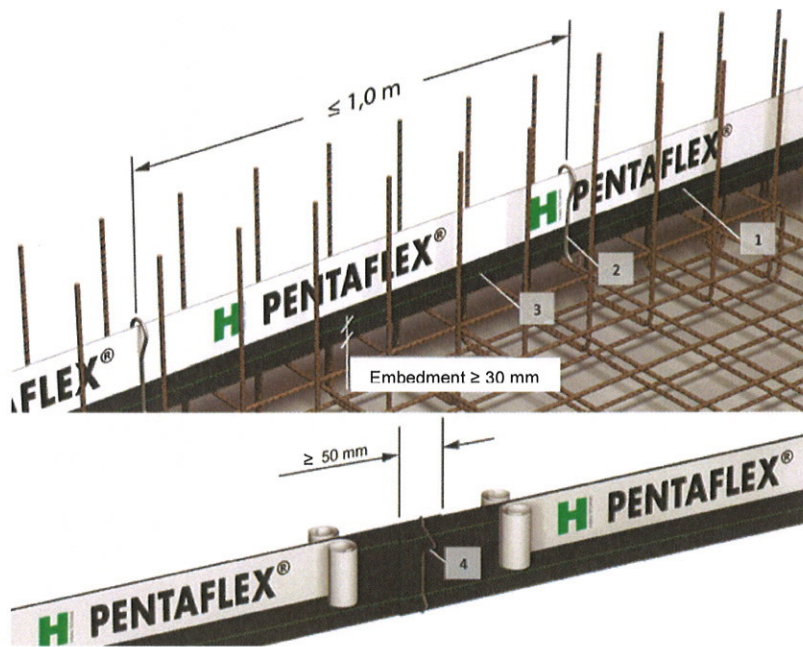
**5 Technical details necessary for the implementation of the AVCP system, as provided for in the applicable EAD**

Technical details necessary for the implementation of the AVCP system are laid down in the control plan deposited at Deutsches Institut für Bautechnik.

Issued in Berlin on 13 January 2015 by Deutsches Institut für Bautechnik

Dirk Brandenburger  
Head of Department

*beglaubigt:*  
Hemme



- 1 Coated metal water stop "PENTAFLEX KB"  
protection foil partially removed – for horizontal and vertical joints construction joints
- 2 Holder
- 3 Safety Line
- 4 Joint clip

Performance of the product:

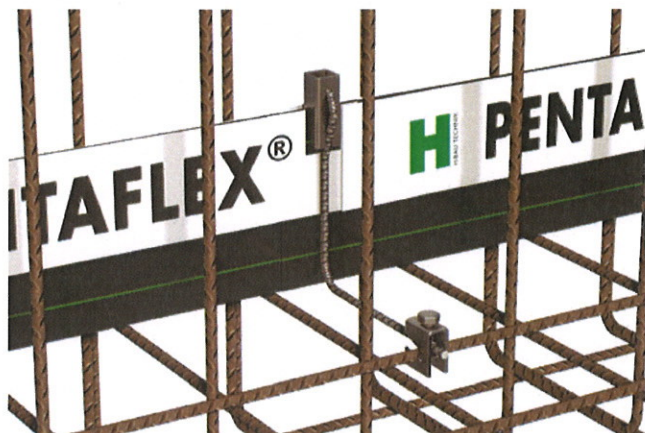
Reaction to fire acc. to EN 13501-1	Class E
Use category related to BWR 3	S/W 2
Content and/or releases of dangerous substances	see section 3.3
Watertightness in end use conditions h = 167 mm, t = 0.6 mm h = 80 mm, t = 0.6 mm	up to 20 m up to 10 m
Bondstrength at the state of delivery	> 0.8 N/mm <sup>2</sup>
Bondstrength after heat aging	pass (< 20 %)
Volatile compounds	pass (< 3 %)

PENTAFLEX KB, PENTAFLEX KB Plus, PENTAFLEX FTS, PENTAFLEX OBS,  
PENTAFLEX ABS, H-Bau Technik GmbH

**System built-up, use categories and performances of the product**

Annex A1

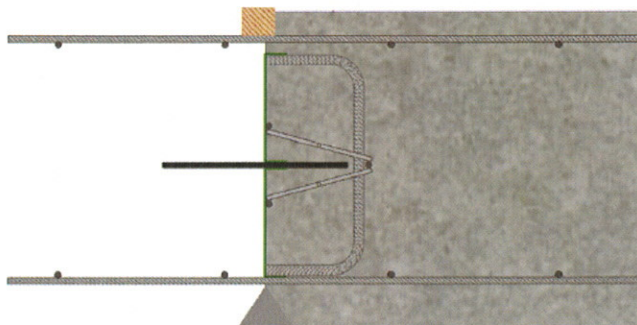
PENTAFLEX KB Plus – in addition with electrical grounding



PENTAFLEX ABS – with stop end panel

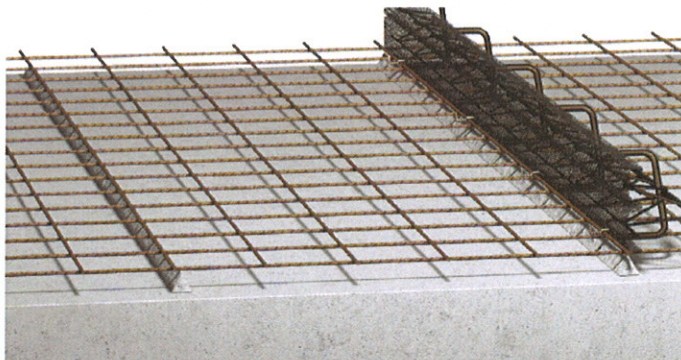
2. Concreting step

1. Concreting step



2. Concreting step

1. Concreting step

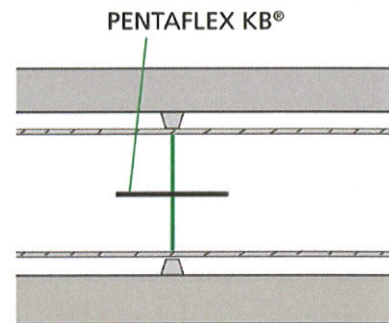


PENTAFLEX KB, PENTAFLEX KB Plus, PENTAFLEX FTS, PENTAFLEX OBS,  
 PENTAFLEX ABS, H-Bau Technik GmbH

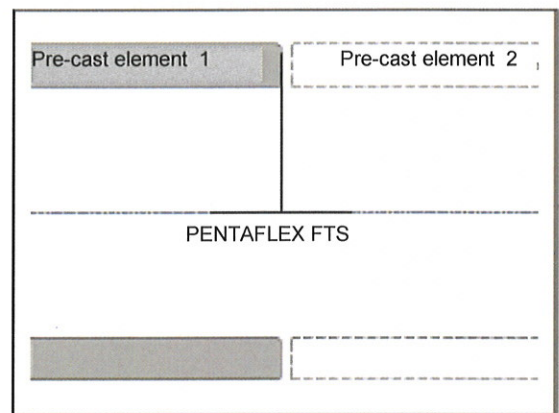
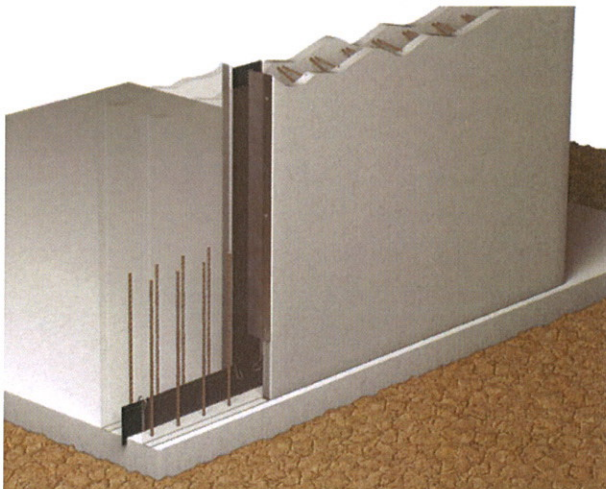
Description of equipment

Annex A2

PENTAFLEX OBS - for controlled crack joints in concrete



PENTAFLEX FTS – for controlled crack joints in pre-cast elements



PENTAFLEX KB, PENTAFLEX KB Plus, PENTAFLEX FTS, PENTAFLEX OBS,  
 PENTAFLEX ABS, H-Bau Technik GmbH

**Description of equipment**

Annex A3



### Installation

The levels of use categories and the performance of the waterproofing product can be assumed only, if the installation is carried out according to the installation instructions stated in the technical file of the manufacturer, in particular taking account of the following points:

- Installation by appropriately trained personnel
- Installation of only those components which are specified as components of the products
- Installation with the required tools
- Inspecting the substrate surface and the joint surface for cleanliness and correct treatment
  
- During storage and installation the water stop must be protected from excessive warming.
- The water stop is generally located in the center of the construction joints respectively crack control sections.
- The embedment in the concreting steps must be at least 30 mm. The safety line (PENTAFLEX KB, PENTAFLEX KB Plus) is used to control the minimum installation depth during installation and concreting.
- The distance between water stop and the edge of the construction element must be at least 50 mm respectively at least three times of maximum grain size.
- The water stop has to be attached with variable retaining clips on or at the reinforcement. During concreting the water stop should not move and should not float.
- The overlapping between the water stops is at least 50 mm. After removing the protective foil, the water stops are pressed tightly together. Finally, overlapping has to be secured with the joint clips.
- The protective foil should be removed just before concreting, because the coating has to be protected from pollution. The second part of the protection foil has to be removed earliest after the concreting of the first concreting step.
  
- Inspecting of position and fixing of the water stop during installation and of the finished installed water stop respectively after the 1. concrete step and documentation of the results.

<p>PENTAFLEX KB, PENTAFLEX KB Plus, PENTAFLEX FTS, PENTAFLEX OBS, PENTAFLEX ABS, H-Bau Technik GmbH</p>	<p>Annex B</p>
<p><b>Intended use</b> Specifications</p>	