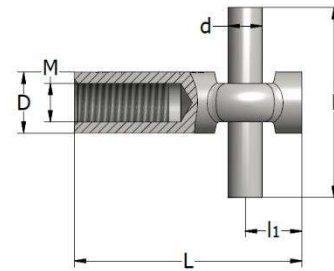




## FIXING INSERT WITH CROSS-DRILLED HOLE AND CROSS-PIN – HBUS



Fixing inserts HBUS are manufactured from steel bar 11SMnPb30 (W 1.0718) galvanized (EV) or from stainless steel bar A2 – 304 / 1.4305 (SS2) or A4-316Ti / 1.4571 (SS4). The cross-pin is made from steel bar S235JR. **Do not use these inserts for lifting.**

HBUS-EV	Product no.	Thread	Overall length	D	l <sub>1</sub>	Cross-pin		Admissible load
						d	l	
		M	[mm]	[mm]	[mm]	[mm]	[mm]	[kN]
HBUS M10x50-EV	45486	10	50	14	13	6	50	3.5
HBUS M10x60-EV	45462	10	60	14	13	6	50	4.0
HBUS M12x60-EV	45487	12	60	16	15	9	50	6.0
HBUS M12x70-EV	45463	12	70	16	15	9	50	7.0
HBUS M16x80-EV	45488	16	80	22	16	10	80	8.0
HBUS M16x85-EV	45489	16	85	22	16	10	80	9.0
HBUS M16x100-EV	45320	16	100	22	16	10	80	13.0
HBUS M20x100-EV	45490	20	100	26	24	12	80	14.0
HBUS M20x130-EV	45465	20	130	26	24	12	80	18.0
HBUS M24x120-EV	45491	24	120	32	32	15	100	18.0
HBUS M24x150-EV	45398	24	150	32	32	15	100	23.0

HBUS-SS2 (1.4305)	Product no.	Thread	Overall length	D	l <sub>1</sub>	Cross-pin		Admissible load
						d	l	
		M	[mm]	[mm]	[mm]	[mm]	[mm]	[kN]
HBUS M10x50-SS2	45321	10	50	14	13	6	50	3.5
HBUS M10x60-SS2	45498	10	60	14	13	6	50	4.0
HBUS M12x60-SS2	45374	12	60	16	15	9	50	6.0
HBUS M12x70-SS2	45499	12	70	16	15	9	50	7.0
HBUS M16x80-SS2	45376	16	80	22	16	10	80	8.0
HBUS M16x85-SS2	45500	16	85	22	16	10	80	9.0
HBUS M16x100-SS2	45501	16	100	22	16	10	80	13.0
HBUS M20x100-SS2	45378	20	100	26	24	12	80	14.0
HBUS M20x130-SS2	45502	20	130	26	24	12	80	18.0
HBUS M24x120-SS2	45380	24	120	32	32	15	100	18.0
HBUS M24x150-SS2	45503	24	150	32	32	15	100	23.0

HBUS-SS4 (1.4571)	Product no.	Thread	Overall length	D	l <sub>1</sub>	Cross-pin		Admissible load
						d	l	
		M	[mm]	[mm]	[mm]	[mm]	[mm]	[kN]
HBUS M10x50-SS4	45373	10	50	14	13	6	50	3.5
HBUS M10x60-SS4	45492	10	60	14	13	6	50	4.0
HBUS M12x60-SS4	45375	12	60	16	15	9	50	6.0
HBUS M12x70-SS4	45493	12	70	16	15	9	50	7.0
HBUS M16x80-SS4	45377	16	80	22	16	10	80	8.0
HBUS M16x85-SS4	45494	16	85	22	16	10	80	9.0
HBUS M16x100-SS4	45495	16	100	22	16	10	80	13.0
HBUS M20x100-SS4	45379	20	100	26	24	12	80	14.0
HBUS M20x130-SS4	45496	20	130	26	24	12	80	18.0
HBUS M24x120-SS4	45381	24	120	32	32	15	100	18.0
HBUS M24x150-SS4	45497	24	150	32	32	15	100	23.0