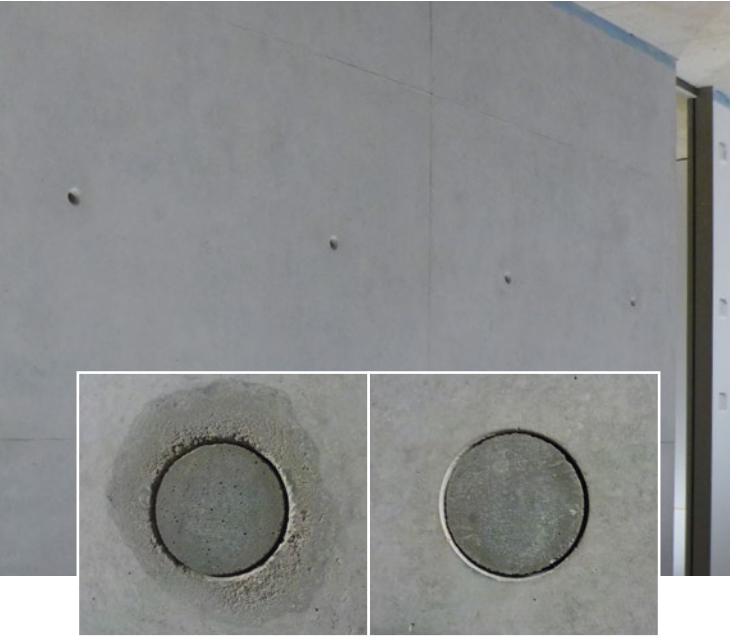


Fairfaced Concrete

When it comes to aesthetics ...



Concrete surfaces often need to be provided with a natural, smooth and even look. However, it is rarely possible to completely eliminate defects. Here, the concrete fillers from MC offer a reliable solution, backed up by long and successful market presence.

However even with perfectly matched pigmentation, filler treated surfaces can appear different due to the variation of porosities.

Concrete retouch produces a perfect match, with both – filler treated and non-treated concrete surfaces. Creating the look of a fine fairfaced finish.

Concrete Cosmetics from MC

Perfect surface finish for concrete

System components

- Mineral bonding agent
- Coarse filler
- Fine and superfine filler
- Cosmetic additives

Auxiliary products

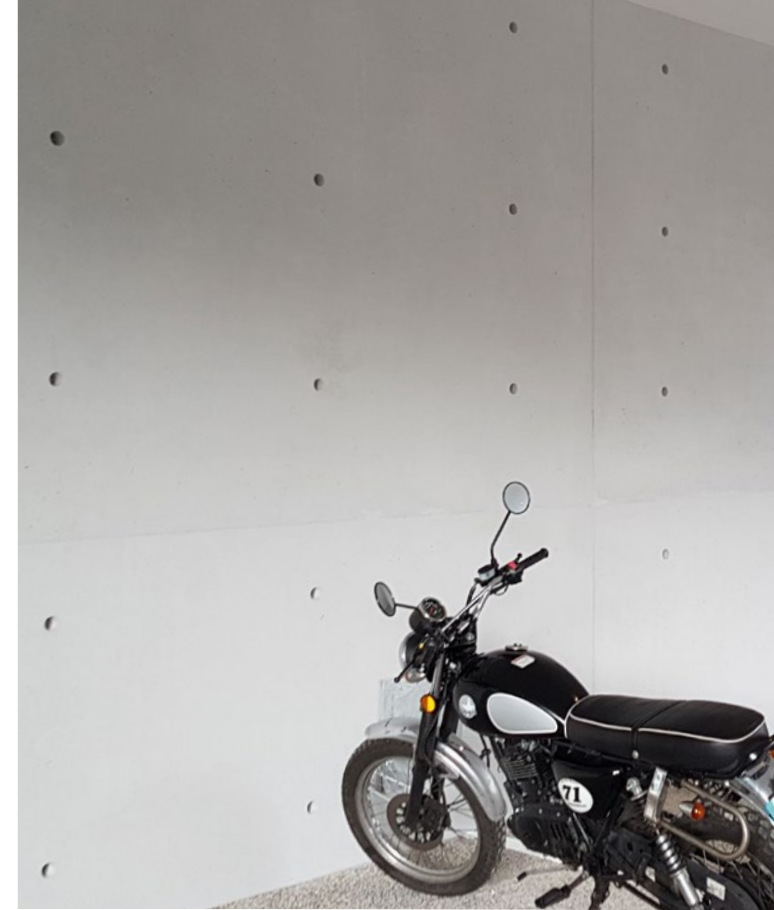
- Hydrophobic agents
- Impregnation
- Anti-graffiti protection
- Care and cleaning
- Tools

MC-Bauchemie Müller GmbH & Co. KG
Concrete Industry
Am Kruppwald 1-8
46238 Bottrop
Germany

Phone: +49 2041 101-50
Fax: +49 2041 101-588

CI@mc-bauchemie.com
www.mc-bauchemie.com

Contact details



Concrete Retouch

Providing the perfect
fairfaced look

EXPERTISE
CONCRETE COSMETICS



Concrete Retouch

Natural and uniform correction

Substrate

The surface has to be clean, solid and load-bearing. All substances likely to reduce adhesion and all loose particles must be removed.

Filling works

Apply Emcefix-Haftbrücke to the pre-wetted and slightly damp substrate. While the bonding agent is still matt-damp, apply Emcefix-Spachtel G coarse filler to the area requiring repair.

A finish look can be achieved with Emcefix-Spachtel F fine filler using MC-Tool Rubber float. To get a premium surface, we recommend to refine the surface using MC-Tool Sponge or to grind using a grinding tool.

Concrete Retouch

Once the fine or superfine fillers have cured, the concrete retouching work can begin. For this purpose the following products are available:

- Repacryl light grey
- Repacryl concrete grey
- Repacryl pale grey

Repacryl is diluted 1:1-4 with water and dabbed on the concrete surface or into the surface treated with filler, using MC-Tool Natural Sponge.

This Is How It Works ...



Untreated concrete surface



Concrete cosmetics



Retouching with MC-Tool Natural Sponge

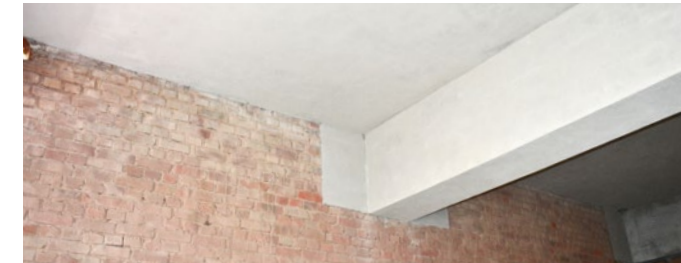


Final result

... In Practice



Before



After

Concrete Retouch in outdoor areas

Once the Concrete Retouch has dried, treat the surface with a hydrophobic agent such as Emcephob L or with an impregnation such as MC-Color Proof. That will ensure that your concrete surface is well protected against weathering!

